

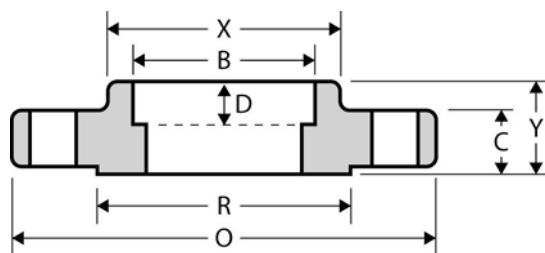
The Best Products, The Best Service...

SERVICE METAL

ONE CALL GETS IT ALL



Socket Weld Flange CLASS 1500 Inches / Pounds



Nominal Pipe Size	Outside Diam. of Flange (O)	Thick. of Flange (C)	Diam. of Raised Face (R)	Diam. of Hub at Base (X)	Length thru Hub (Y)	Diam. of Bore (B)	Depth of Socket (D)	No. of Holes	Diam. of Holes	Diam. of Bolts	Diam. of Bolt Circle	Approx. Weight (in Pounds)
1/2	4.75	0.88	1.38	1.50	1.25	0.88	0.38	4	0.88	0.75	3.25	4
3/4	5.12	1.00	1.69	1.75	1.38	1.09	0.44	4	0.88	0.75	3.50	5
1	5.88	1.12	2.00	2.06	1.62	1.36	0.50	4	1.00	0.88	4.00	8
1 1/4	6.25	1.12	2.50	2.50	1.62	1.70	0.56	4	1.00	0.88	4.38	9
1 1/2	7.00	1.25	2.88	2.75	1.75	1.95	0.62	4	1.12	1.00	4.88	12
2	8.50	1.50	3.62	4.12	2.25	2.44	0.69	8	1.00	0.88	6.50	25
2 1/2	9.62	1.62	4.12	4.88	2.50	2.94	0.75	8	1.12	1.00	7.50	36
3	10.50	1.88	5.00	5.25	2.88	—	—	8	1.25	1.12	8.00	48
4	12.25	2.12	6.19	6.38	3.56	—	—	8	1.38	1.25	9.50	73
5	14.75	2.88	7.31	7.75	4.12	—	—	8	1.62	1.50	11.50	130
6	15.50	3.25	8.50	9.00	4.69	—	—	12	1.50	1.38	12.50	165
8	19.00	3.62	10.62	11.50	5.62	—	—	12	1.75	1.62	15.50	260
10	23.00	4.25	12.75	14.50	6.25	—	—	12	2.00	1.88	19.00	435
12	26.50	4.88	15.00	17.75	7.12	—	—	16	2.12	2.00	22.50	580
14	29.50	5.25	16.25	19.50	—	—	—	16	2.38	2.25	25.00	—
16	32.50	5.75	18.50	21.75	—	—	—	16	2.62	2.50	27.75	—
18	36.00	6.38	21.00	23.50	—	—	—	16	2.88	2.75	30.50	—
20	38.75	7.00	23.00	25.25	—	—	—	16	3.12	3.00	32.75	—
24	46.00	8.00	27.25	30.00	—	—	—	16	3.62	3.50	39.00	—

* Dimensions conform to ASTM A/SA-105; ANSI B16.5