

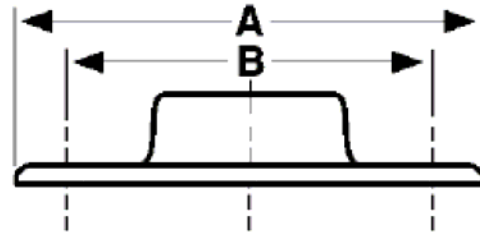


The Best Products, The Best Service...

SERVICE METAL

ONE CALL GETS IT ALL

Floor Flange 150# Malleable Iron Inches / Pounds



Size	A	B	Hole	Approximate Weight (in Pounds)
1/4	2.83	2.00	0.31	0.28
3/8	2.75	1.90	0.31	0.26
1/2	3.00	2.10	0.28	0.36
3/4	3.40	2.40	0.26	0.50
1	3.80	2.80	0.26	0.60
1 1/4	4.20	3.20	0.28	0.88
1 1/2	4.60	3.45	0.30	1.08
2	5.20	4.00	0.30	1.58
2 1/2	6.75	5.00	0.37	2.48
3	7.88	6.00	0.45	3.42
4	9.50	7.00	0.45	5.70

**Malleable Castings conform to ASTM A197*

**Hot-Dipped Galvanized Fittings conform to ASTM A153*

**Malleable Fitting Dimensions conform to ASME B16.3*

**Malleable Bushings, Plugs and Locknuts conform to ASME B16.14*

**Malleable Unions conform to ASME B16.39*

**NPT Threads on all fittings conform to ASME B1.20.1*

**Class 150 fittings are UL listed and FM approved at 300 psi*

**Class 300 fittings are UL listed*