

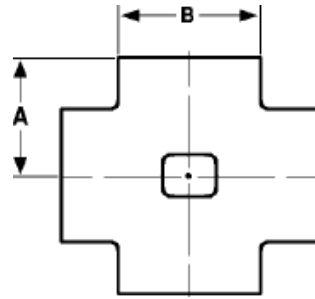
The Best Products, The Best Service...

SERVICE METAL

ONE CALL GETS IT ALL



Threaded Cross 2000# Forged Steel Inches / Pounds



Size	A	B	Approximate Weight (in Pounds)
1/8	0.81	0.88	0.54
1/4	0.81	0.88	0.52
3/8	0.97	1.00	0.60
1/2	1.12	1.31	0.84
3/4	1.31	1.50	1.20
1	1.50	1.81	1.67
1 1/4	1.75	2.19	2.48
1 1/2	2.00	2.44	3.41
2	2.38	2.97	5.51
2 1/2	3.00	3.62	16.6

**ASTM SA-105, ANSI B16.11*