

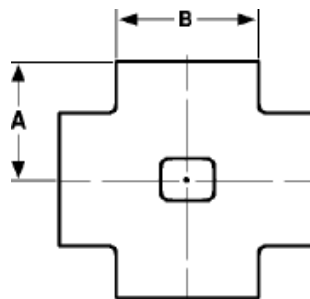
The Best Products, The Best Service...

SERVICE METAL

ONE CALL GETS IT ALL



Socket Weld Cross 3000# Forged Steel Inches / Pounds



Size	A	B	Approximate Weight (in Pounds)
1/4	0.82	0.82	0.25
3/8	0.91	0.98	0.34
1/2	1.00	1.20	0.75
3/4	1.25	1.41	1.00
1	1.38	1.74	1.49
1 1/4	1.56	2.10	2.20
1 1/2	1.75	2.36	2.81
2	2.12	2.89	4.77
2 1/2	2.24	3.54	12.50
3	2.87	4.21	18.20
4	3.37	5.30	32.30

**ASTM SA-105, ANSI B16.11*