

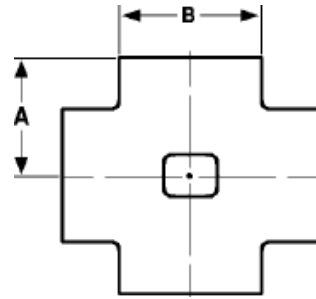
The Best Products, The Best Service...

# SERVICE METAL

ONE CALL GETS IT ALL



## Threaded Cross 3000# Forged Steel Inches / Pounds



Size	A	B	Approximate Weight (in Pounds)
1/8	0.81	0.88	0.42
1/4	0.97	1.00	0.52
3/8	1.12	1.31	0.98
1/2	1.31	1.50	1.48
3/4	1.50	1.81	2.52
1	1.75	2.19	3.58
1 1/4	2.00	2.44	4.10
1 1/2	2.38	2.97	6.55
2	2.50	3.31	8.12
2 1/2	3.27	4.02	16.88
3	3.74	4.76	18.56

*\*ASTM SA-105, ANSI B16.11*