

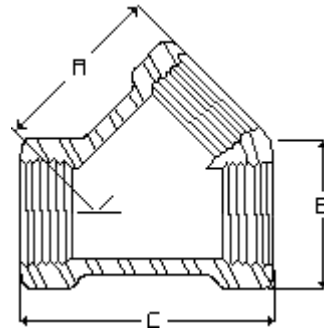
The Best Products, The Best Service...

SERVICE METAL

ONE CALL GETS IT ALL



Threaded Lateral 3000# Forged Steel Inches / Pounds



Size	A	B	C	Approximate Weight (in Pounds)
1/8	1.75	1.50	2.50	1.27
1/4	1.75	1.50	2.50	1.27
3/8	1.75	1.50	2.50	1.12
1/2	1.75	1.50	2.50	.95
3/4	2.13	1.75	3.00	1.51
1	2.50	2.00	3.50	2.21
1 1/4	2.81	2.44	4.00	3.40
1 1/2	3.19	2.75	4.50	4.72
2	4.38	3.31	6.00	9.41
2 1/2	5.31	4.00	7.50	15.60

**ASTM SA-105, ANSI B16.11*