

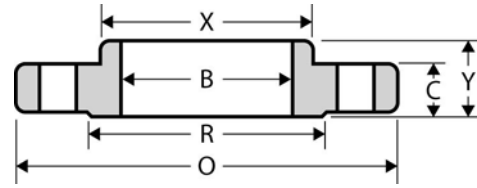


The Best Products, The Best Service...

# SERVICE METAL

ONE CALL GETS IT ALL

## Slip-On Flange CLASS 900 Inches / Pounds



Nominal Pipe Size	Outside Diam. of Flange (O)	Thick. of Flange (C)	Diam. of Raised Face (R)	Diam. of Hub at Base (X)	Length thru Hub (Y)	Diam. of Bore (B)	No. of Holes	Diam. of Holes	Diam. of Bolts	Diam. of Bolt Circle	Approx. Weight (in Pounds)											
1/2	<b>USE CLASS 1500 DIMENSIONS IN THESE SIZES</b>																					
3/4																						
1																						
1 1/4																						
1 1/2																						
2																						
2 1/2	<b>USE CLASS 1500 DIMENSIONS IN THESE SIZES</b>																					
3												9.50	1.50	5.00	5.00	2.12	3.57	8	1.00	0.88	7.50	26
4												11.50	1.75	6.19	6.25	2.75	4.57	8	1.25	1.12	9.25	53
5												13.75	2.00	7.31	7.50	3.12	5.66	8	1.38	1.25	11.00	83
6												15.00	2.19	8.50	9.25	3.38	6.72	12	1.25	1.12	12.50	110
8												18.50	2.50	10.62	11.75	4.00	8.72	12	1.50	1.38	15.50	170
10	21.50	2.75	12.75	14.50	4.25	10.88	16	1.50	1.38	18.50	245											
12	24.00	3.12	15.00	16.50	4.62	12.88	20	1.50	1.38	21.00	325											
14	25.25	3.38	16.25	17.75	5.12	14.14	20	1.62	1.50	22.00	400											
16	27.75	3.50	18.50	20.00	5.25	16.16	20	1.75	1.62	24.25	425											
18	31.00	4.00	21.00	22.25	6.00	18.18	20	2.00	1.88	27.00	600											
20	33.75	4.25	23.00	24.50	6.25	20.20	20	2.12	2.00	29.50	730											
24	41.00	5.50	27.25	29.50	8.00	24.25	20	2.62	2.50	35.50	1400											

\* Dimensions conform to ASTM A/SA-105; ANSI B16.5