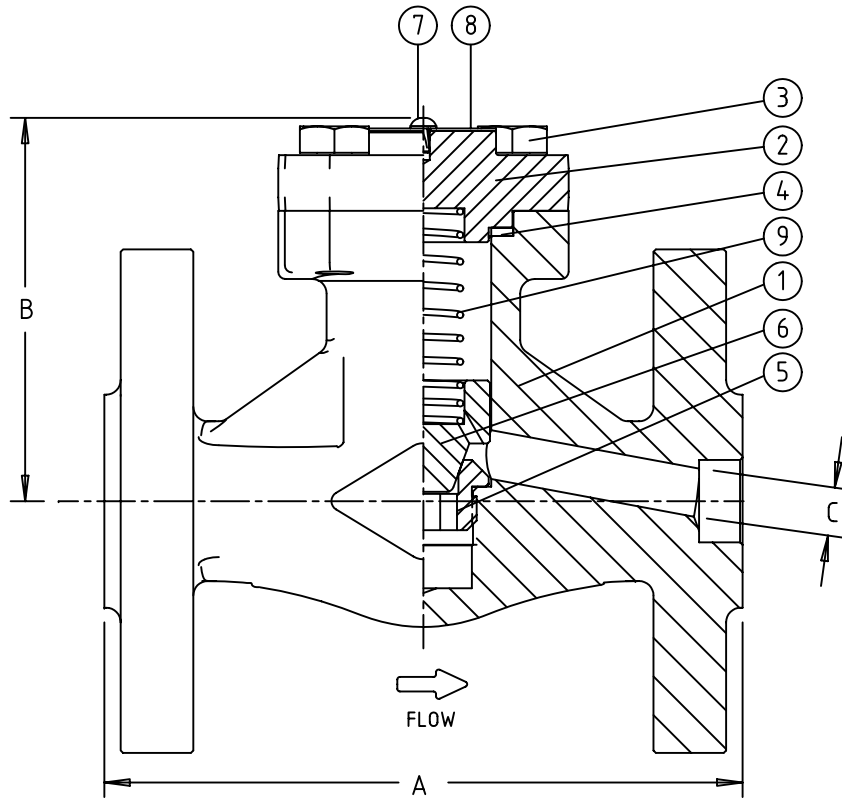


**NOTES**

1. VALVE COMPLIES WITH DESIGN AND TESTING FEATURES OF API 602
2. DESIGN AND PRESSURE/TEMPERATURE RATING TO ASME/ANSI B16.34
3. INSTALL HORIZONTAL ONLY - CAP UP
4. FLANGES INTEGRALLY FORGED WITH BODY AND COMPLY WITH ASME B16.10 & B16.5

LIST OF PARTS				
ITEM	DESCRIPTION	QTY.	MATERIAL	SPECIFICATION
1	BODY	1	FORGED CARBON STEEL, PHOSPHATED	ASTM A105
2	CAP	1	FORGED CARBON STEEL, PHOSPHATED	ASTM A105
3	CAPSCREW	4	ALLOY STEEL	ASTM A193 Grade B7
4	GASKET	1	AISI 304 WITH GRAPHITE FILLER	API 602
5	HF OVERLAY	1	STELLITE NO. 6	UNS R30006
6	DISC	1	420 STAINLESS STEEL	ASTM A743 GRADE CA-40
7	DRIVE SCREW	2	CARBON STEEL	COMMERCIAL
8	NAMEPLATE	1	ALUMINUM	COMMERCIAL (BLUE = 13Cr TRIM)
9	SPRING	1	302 STAINLESS STEEL	COMMERCIAL



DIMENSIONAL DATA					
SIZE	1/2"	3/4"	1"	1 1/2"	2"
A	4.25	4.625	5.00	6.50	8.00
B	3.150	3.543	3.465	3.937	4.134
C	.375	.500	.750	1.188	1.438
WEIGHT (Lbs)	3/8	1/2	3/4	1 3/16	1 7/16



FIG. SC81 CLASS 150  
FORGED STEEL, BOLTED CAP  
SPRING PISTON CHECK VALVE

SIZE A	DRAWING NO. SC81 □□□□*	REV. 0
-----------	---------------------------	-----------